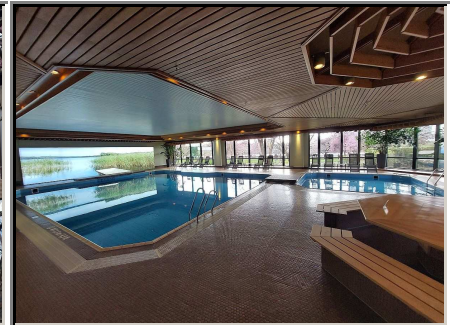
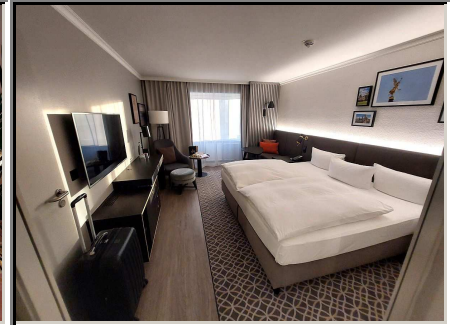
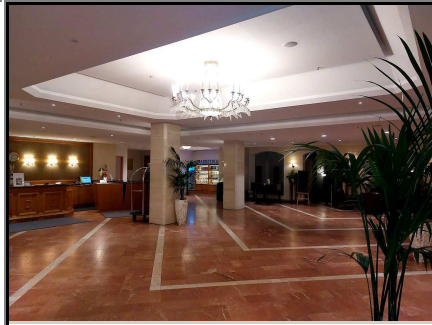


Hotelbrochure for hotel :

BILDERBERG BELLEVUE

DRESDEN



First Class

4star****+

340 guest rooms

distance (km):

city centre: trade fair: airport: e-charger:

Situated in the middle of the hotel-owned Bellevue-Gardens, directly located beneath River Elbe with grand views to the ancient city skyline of Dresden. Modern furnished rooms and suites, one Presidential-Suite and numerous conference rooms and salons for meetings and festivals of all kind. A gym and Dresdens largest hotel pool site viewing to River Elbe and the ancient city line, restaurant and cosy lobby bar are completing the amenities. The location only few minutes walking distance from the ICE-train station Dresden-Neustadt, the Augustus Bridge to the ancient city with Frauenkirche, Semperoper and Hofkirche, as well as the monument statue Goldener Reiter and the city quarte Neustadt feature the hotel also for many touristical activities.

room features:

hairdryer
minibar
safe locker
Sky TV
air condition

hotel features:

pets allowed
outdoor parking
garage

non-smoking hotel

business:

wireless lan
meeting room
business center
credit cards acc.

wellness/sports:

gym
sauna

pool

food + beverage:

breakfast bufett
hotel bar
bistro/cafe
restaurant(s)

[HOTELRESERVATION](#)

[BUSCHARTER](#)

[INCENTIVES](#)

[MEETINGS](#)

all informations to best knowledge, however without liability, changes reserved.

Version 23.03.2024 copyright CITI INCOMING®

Hotelbrochure for hotel :

BILDERBERG BELLEVUE

DRESDEN

garten/park



others: